

Be a _____ to the _____,
an admonisher to the _____,
an answerer of the _____ of the _____.

- Bahá'u'lláh



poor

rich

treasure

cry

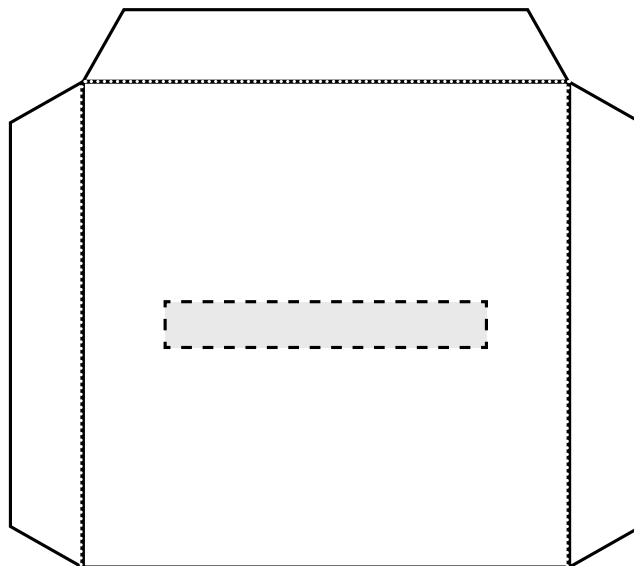
needy

Colour in the picture of the poor man and his children who came to visit 'Abdu'l-Bahá and complete the quote above by putting the words in the right spaces. If you get stuck you could look on page 4 for a clue.

Only Bahá'ís can give to the Bahá'í fund, but there are many other causes you could give to.

You could talk to a grown-up or teacher to find a charity that's close to your heart.

You could add drawings, pictures and words that encourage generosity.

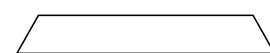


Cut along the black line.

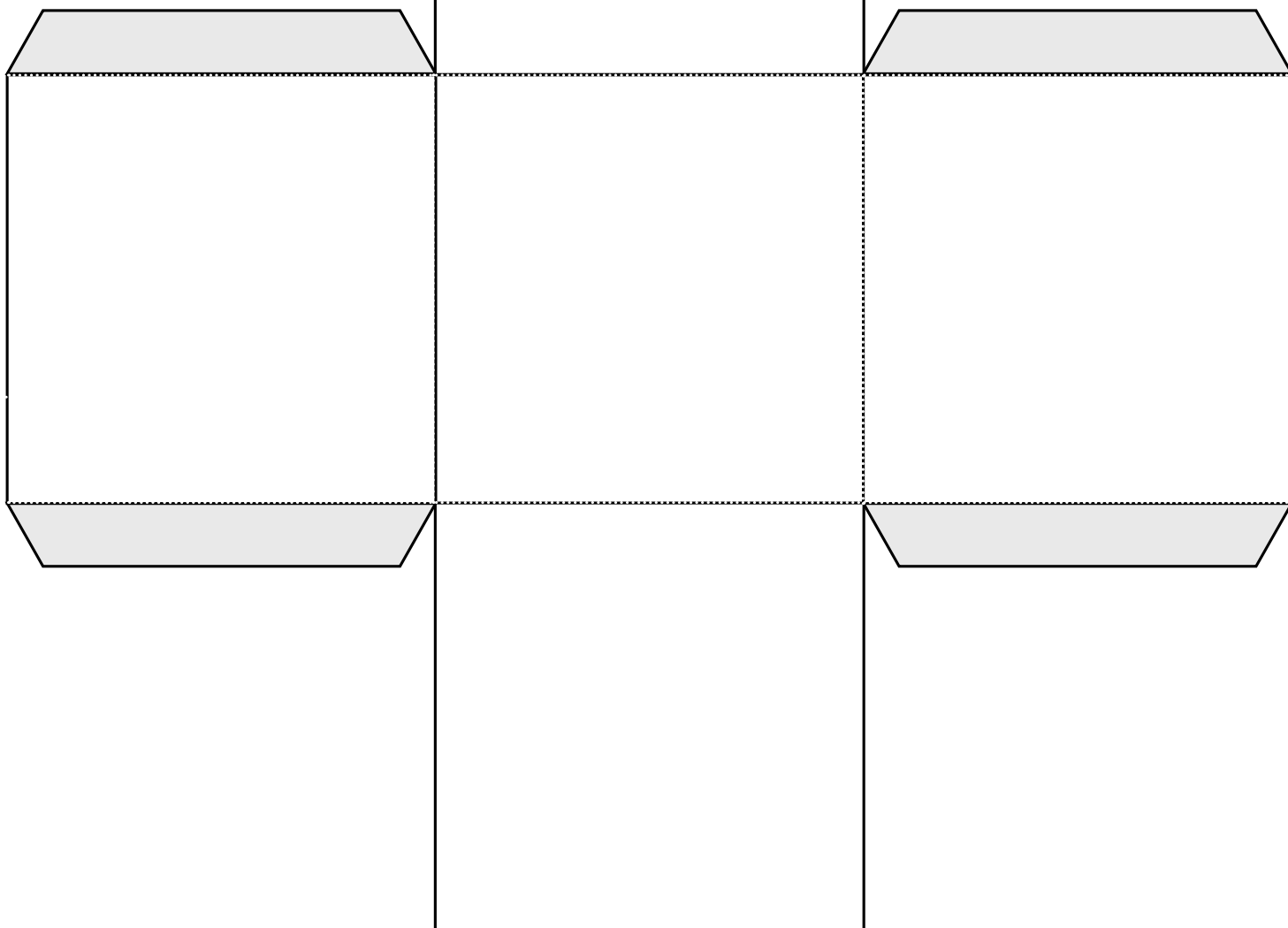
Score along the dotted line.



Cut out the grey dashed rectangle.



Glue the grey tabs.



KALIMÁT KORNER

Let's have fun with words & pictures



Why not send me a puzzle, poem or joke & we may feature it in our next magazine? Email Kalimát at dayspring@bahai.org.uk

WEALTHY WORDS

Find and cross off these generous words in the wordsearch. Words can be forwards, backwards or diagonal.

T	C	B	G	R	X	B	L	L	S
N	I	D	L	I	I	O	P	U	E
E	T	O	S	A	V	O	W	F	L
L	S	W	Y	I	U	I	E	T	F
O	I	B	N	K	S	O	N	H	L
V	U	G	Q	I	F	E	N	G	E
E	R	G	E	N	E	R	O	U	S
N	T	Y	Y	D	F	M	G	O	S
E	L	B	A	T	I	R	A	H	C
B	A	A	V	K	V	Z	L	T	K

**KIND
LOVING
GIVING
SELFLESS
GENEROUS
ALTRUISTIC
CHARITABLE
THOUGHTFUL
BENEVOLENT**

Hello friend! These wealthy words are my kinda words! All warm and full of love and sunshine. I love to share my light and heat with the world. I illumine dark spaces, grow flowers, fruits and vegetables and make holidays more fun! But too much of a good thing can sometimes be a bad thing. Too much light can be blinding, too much sunshine can make plants wither and die or give you nasty sunburn. I think the key thing to remember is to have a healthy dose of moderation in all things, don't you agree?



CLOUD MAZE

Help Kalimát navigate through the obscuring cloud to get to the happy sunshine on the other side.



TONGUE TWISTER

Gooey sweet honey,
Is ever so scrummy,
It fills up my tummy
And sticks to my money!

WOULD YOU RATHER?

Would you rather have flowers
or feathers for hair?

Would you rather soar like an
eagle in the sky or swim like a
whale in the deep blue sea?

Would you rather live in a
desert or a desert?

Draw
what I'm
looking
at!



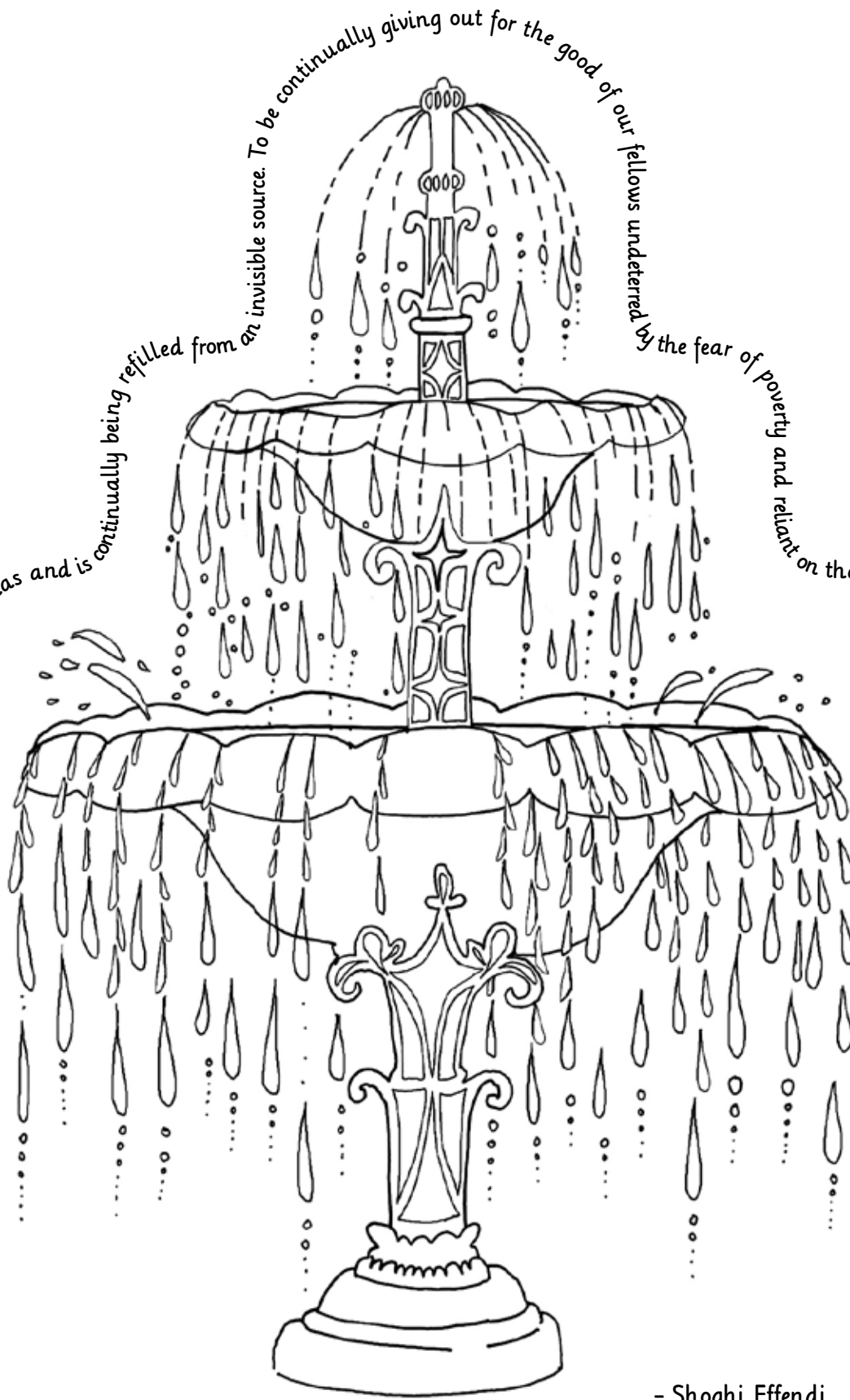
WHAT IS KALIMÁT WATCHING IN
THE SKY THAT'S SO INTERESTING?

I-SPY COLOUR FUN

The first letter of (some) of the illustrations below begins with one of the letters in the word **CHARITY**.
Colour everything beginning with **C** in **BLUE**, **H** in **GREEN**, **A** in **YELLOW**,
R in **RED**, **I** in **ORANGE**, **T** in **PURPLE** and **Y** in **PINK**.



'We must be like the fountain or spring that is continually emptying itself of all that it has and is continually being refilled from an invisible source. To be continually giving out for the good of our fellows undeterred by the fear of poverty and reliant on the un-failing bounty of the Source of all wealth and all good — this is the secret of right living.'

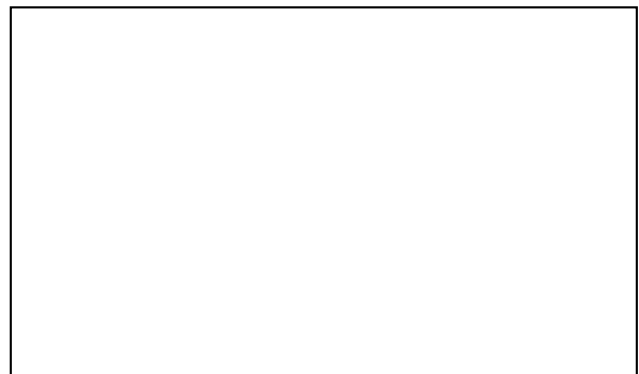
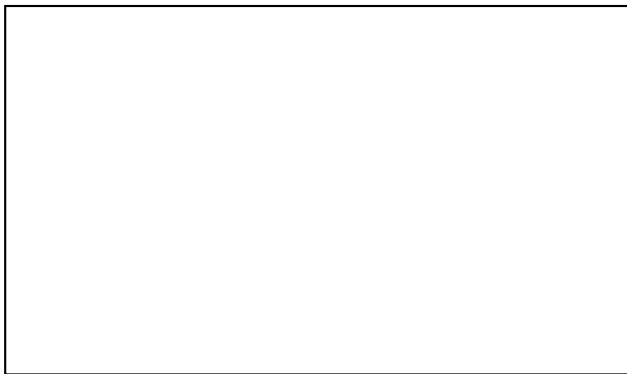
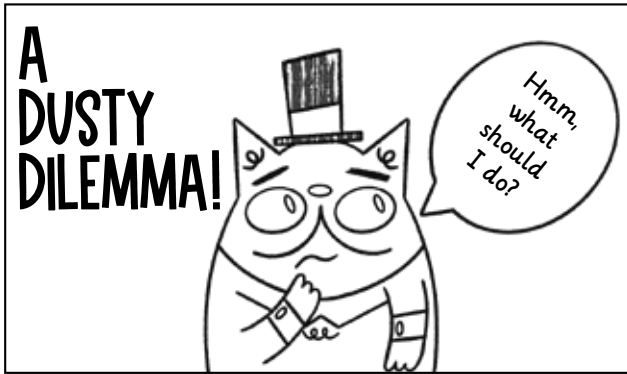


- Shoghi Effendi

— this is the secret of right living.

FINISH THE STORY!

You decide how this ends... is it a tale of goodness or greed?



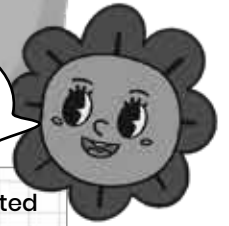
MONEY MATCH

Draw a wiggly, squiggly line from the coin on the top row to its matching pair on the bottom row. Take care though, the differences are rather subtle.



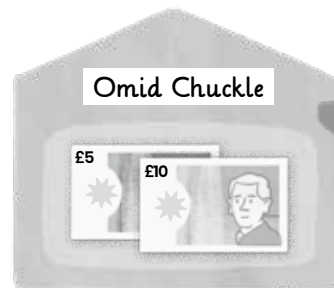
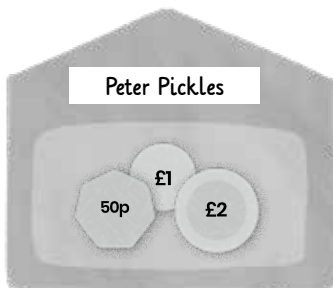
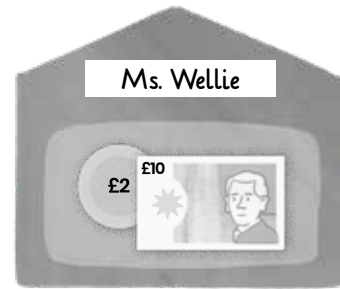
TRUSTED TREASURER

Remember to use a calculator if you need one.



In the peaceful village of Hopehampington the local Bahá'í community have donated generously at the Feast and **YOU!** (their trusted treasurer) have to carefully process their contributions and get the spreadsheet ready to report back at the next LSA meeting. Your community are planning a family festival and need to know how much money is available in the local fund to hire a hall that will cost £65.00.

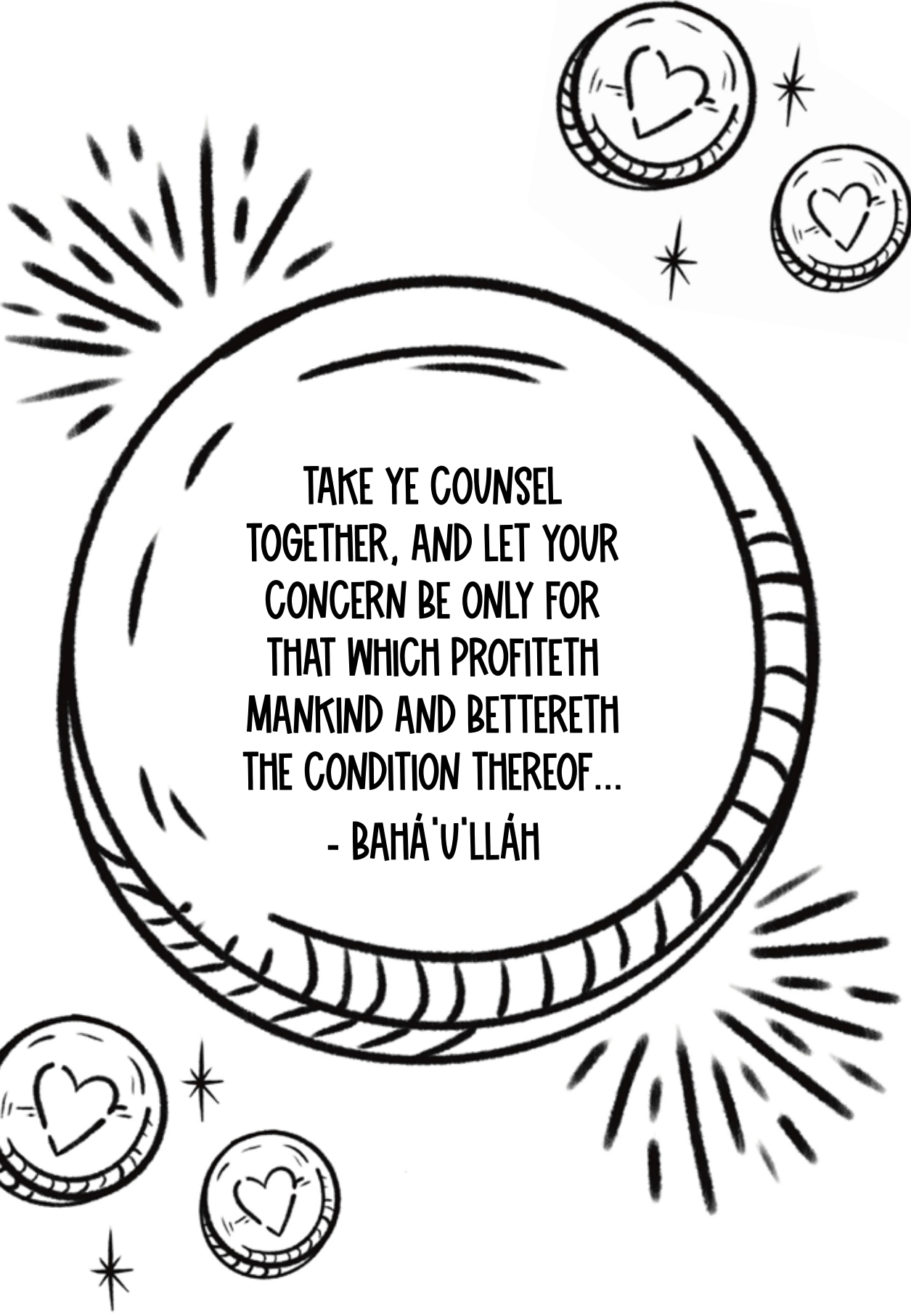
Each colourful envelope has a name on the front and a donation inside. Add the names to the computer spreadsheet, then tot up each donation and add the amount in the green column beside the name and work out the final column total (we've done one for you). When all the donations have been added you'll be able to work out the grand total.



#	Name or Description	DONATION	EXPENSE	Total
1	Current Balance	-	-	£ 22.50
2	Joy Star	£20.00	-	£40.50
3				
4				
5				
6				
7	Snacks for Children's Class	-	£2.50	
			Grand Total	



Have you ever used a spreadsheet before? It's easy when you know how. Donations are always added to the total and expenses are always subtracted from the total - simples! Being a treasurer is a very important job, the whole community relies on you to know how the local fund is doing. Will the Hopehampington community be able to hire the hall for the family festival? I do hope so!



TAKE YE COUNSEL
TOGETHER, AND LET YOUR
CONCERN BE ONLY FOR
THAT WHICH PROFITETH
MANKIND AND BETTERETH
THE CONDITION THEREOF...

- BAHÁ'U'LLÁH